



Travel for **impact**

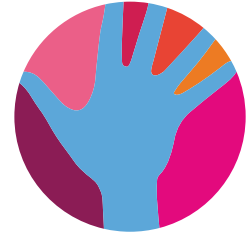
January - March 2024 Newsletter

Dear All,

The beginning of the year has been a whirlwind of activities and celebrations. We are delighted to provide a snapshot of what we and our partners have been up to through this newsletter. Enjoy!

**With best wishes,
Ruth and the Impact Team**

Celebrating Culture. Embracing Sustainability.



Travel for **impact**

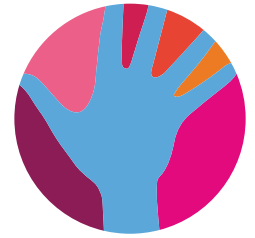
We have had a great start to the year! The majority of our construction projects have come to completion and have been handed over to their respective communities.

Tsutsubega community through their company, Light of Tsutsubega Development Company, had a combined Open Day and Official Handover Ceremony with invited stakeholders and members of the community present for the occasion.

The Impact Fund team officially handed over the newly renovated VDC office, 8 solar panels, wifi router, and ablutions. This was all achieved through joint efforts from the European Union, Solar Zone, Ngami.NET and the Light of Tsutsubega Development Company.



Celebrating Culture. Embracing Sustainability.



Travel for **impact**

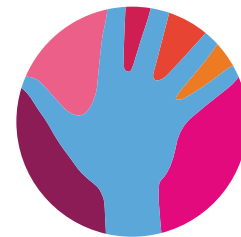


The community of Samochima was excited for their day as well which saw our Impact Fund team handing over an office space and storeroom to the Farmers Committee who are responsible for facilitating activities such as the Annual Samochima Harvest Festival. The space will also help the community, especially the youth and women, to showcase their products and services in line with the rich culture and heritage the village has to offer. Tourists will have a wide range of activities to choose from while in the area such as camping, horse back riding, strawberry picking etc, and this will boost the economy of Samochima and its surrounding communities.



Samochima photo credits to Ndanji Lesetedi.

Shared Learning. Shared Inspiration.



Travel for **impact**

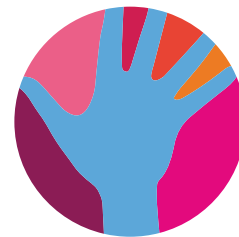
As part of our journey, we have realised the importance of collaborations and stakeholder engagement in order motivate and mobilise small businesses and community organisations.



We were fortunate to collaborate with SOFRECO under the EU funded Jobs Creation and Investment Climate project to support ostrich eggshell and basket weaving artisans with product development ideas to broaden their product range with new, innovative ideas to encourage greater market penetration. 30 artisans from D'Kar, Gumare and the Etshas were engaged, and we look forward to bringing other artisans onboard as well with these new designs as we move forward. Two consultants were engaged, Jane Taylor and Emmanuelle Poncin, who have years of experience under their belt in their respective fields of design, sales, and marketing. We look forward to sharing new product designs with you in due course.



Shared Learning. Shared Inspiration.

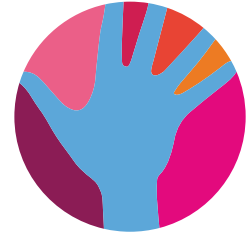


Travel for **impact**

Quality Baskets owner Mma Kushonya took great joy in sharing basket weaving wonderment with school students; she also committed, in collaboration with HRDC, to support a small youth group in uplifting their livelihoods through basket weaving



Building Networks. Uplifting Livelihoods.



Travel for **impact**

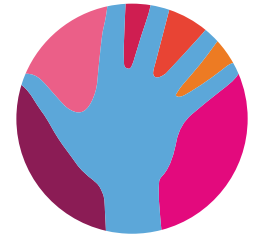


We continue to support our community businesses through showcasing the work of our partners and facilitating meetings with relevant stakeholders to enable our partners to sell their products and services. This quarter we showcased at the Wilderness Suppliers Expo 2024 and welcomed a commitment from Nomad Africa Tours and Safaris towards the glass recycling experience housed at Sedia Hotel; both were a resounding success!

We are also delighted to report that the Glass Project now has an official name, NTLAFATSO GLASS, and a beautiful logo to go with the name!



Building Networks. Uplifting Livelihoods.

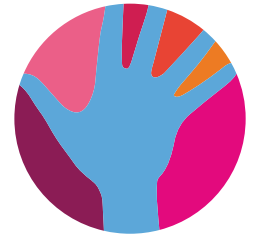


Travel for **impact**

We supported Sharon Atang Arnold, Director at The Space Botswana, on her recent trip to Dubai. Atang was recognised for her remarkable work within the Arts and Creative space in Botswana, and we would like to congratulate her on winning the award celebrating the Impact of Women in the Arts and their role in fostering inclusion and sustainable development. Atang raised the profile of the basket weaving livelihood through wearing 'weave' jewellery.



Connecting Tourism to Social Change.



Travel for **impact**

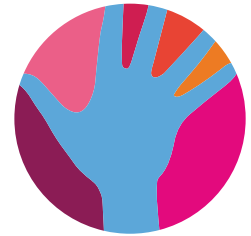


We are always excited to see our Tourism Partners giving back to the community, which is what Chobe Holdings staff members did, by visiting the new Bana Ba Letsatsti Center to help with the cleaning up of the grounds.

We were also fortunate to receive a Peace Corps Volunteer, Dara Bartman, who will be supporting us and our small business partners to reach their true potential. Welcome and we look forward to having you as part of the team.



Thank you to our partners!



Travel for **impact**

A big thank you to our Travel Partners whose support enables us to do what we do.

1USD Partners: Africa Pride, Africa Voyage, Botswana Holidays, Capricorn Safaris, Capture Africa, Desert & Delta Safaris, Drumbeat Safaris, The Elephant Trails Safari Co, Endeavour Safaris, Ker & Downey Botswana, Letaka Safaris, Madiba, Africa Inspiration, Outback Africa, Rainbow Tours, Safari Destinations, Safari Essence, Safari Specialists, Sense of Africa, Explorations Company, Yoga Safaris.

Bednight Bank Partners 2024: & Beyond, African Bush Camps, Belmond Safaris, Bushways Safaris, Cresta Maun, Great Plains Conservation, Helicopter Horizons, Island Safari Lodge, Letaka Safaris, Lodges of Botswana, Machaba Safaris, Mack Air, The Maun Garden Studio Bed & Breakfast, Sanctuary Retreats, Setari Camp. Thamalakane River Lodge.

Donor Partners: European Union, UNESCO, International Fund for Cultural Diversity (IFCD).

To continue supporting our Economic Empowerment Programme and Crafthood
Shop contact - gosa@travelforimpact.com / +267 7347 3897.

CHANGING LIVES FOREVER

PO Box 1762, Maun, Botswana
Tel +267 686 4431 • Mobile +267 7437 9830
www.travelforimpact.com
Plot 245, Mathiba I Road, Maun, Botswana



The People's Path
Celebrating Culture & Heritage

