

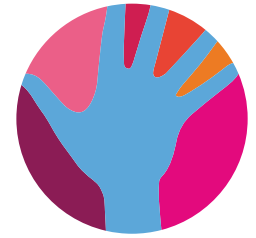
Travel for **impact**

January - June 2023 Newsletter

We are delighted to share our newsletter with you. The first half of 2023 has been incredibly busy working with our small business / community partners, facilitating workshops and supporting our partners to reach their true potential.

We hope you enjoy this selection of photos because as they say, 'a photo speaks a thousand words!'

Shared Learning. Shared Inspiration.



Travel for **impact**

Following a textile product development workshop, Jene Liebenberg donated one of her machines to one of the seamstresses to help her grow her own business.



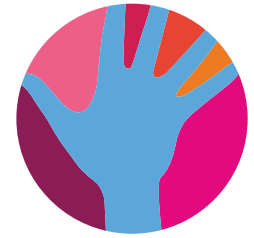
Shorobe and Maun marketing and hosting training facilitated by Cynthia Mothelesi. These were part of a series of workshops hosted in Maun, Shorobe, D'Kar and Shakawe to support female producers with product development, marketing and hosting, and gender dynamics.



Shorobe Baskets product development training facilitated by Boipuso Nyoka and Mma Kushonya.

We hold product development workshops as much as possible to support consistency and quality in production.

Building Networks. Uplifting Livelihoods.



Travel for **impact**



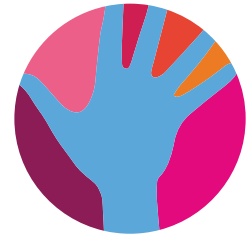
European Union ambassadors' visit to the Glass Project. Fun and games and an opportunity to understand where their investment to training has been spent.

Volunteer Leslie Amoyal worked with us in January and May through the Senior Experten Service and Botswana Investment and Trade Centre initiative. Here she meets with Mma Kushonya from Quality Baskets advising on branding and product development ideas.



Interns Abby, Jordyn, and Logan try their hand at weaving in Shorobe

Celebrating Culture. Embracing Sustainability.



Travel for **impact**



Working with farmers to bring rural life alive for tourists, what better than a donkey cart experience?

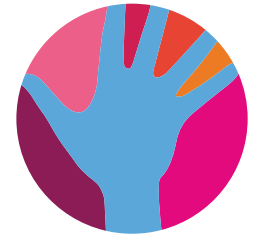
Facilitating sustainable businesses. We hosted a series of financial trainings, personal finance, basic business finance, and developing a business plan, with our partners in Shakawe, Shorobe, D'Kar and Maun facilitated by Leadership2Impact Academy.



D'Kar Open Day showcasing the People's Path and celebrating culture and heritage.



Connecting Tourism to Social Change.



Travel for **impact**

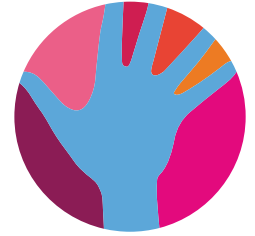


Bana Ba Letsatsi launched the first phase of their new home. The Bednight Bank contributors can be proud of what they achieved and a huge shout out to all of you from the Bana Ba Letsats Team!

Celebrating the partnership between Safari Destinations and Ngamiland Innovation Space. Ngamiland Innovation Space harnesses ICT, business, and innovation to break the digital divide, transform rural communities, and stimulate job creation.



Thank you to our partners!



Travel for **impact**

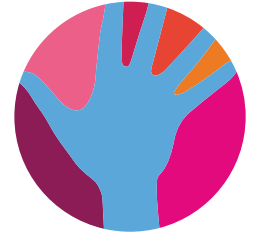


None of this could be possible without the support of our travel partners and donor support – thank you, thank you, thank you.

1USD Partners: Africa Pride, Africa Voyages, Botswana Holidays, Capricorn Safaris, Capture Africa, Desert & Delt Safaris, Drumbeat Safaris, The Elephant Trails Safari Co, Endeavour Safaris, Ker & Downey Safaris, Letaka Safaris, Madiba, Africa Inspiration, Outback Africa, Rainbow Tours, Safari Destinations, Safari Essence, Safari Specialists, Sense of Africa, Yoga Safaris.

We are in the process of updating our 1USD partner contracts and we will be reaching out to you in due course.

Thank you to our partners!



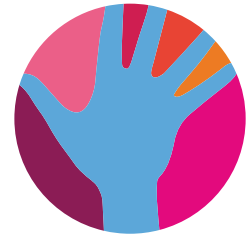
Travel for **impact**

Bednight Bank Partners 2023: & Beyond, Africa Bush Camps, Belmond Safaris, Bushways Safaris, Great Plains, Helicopter Horizons, Island Safari Lodge, Letaka Safaris, Lodges of Botswana, Machaba Safaris, Mack Air, Meno A Kwena, Sanctuary Retreats, Setari Camp.

We are delighted to have kickstarted this initiative once again with yourselves and in partnership with Safari Destinations. As always, we are grateful to those who are onboard but, please know, there is always room for more partners!



Thank you to our partners!



Travel for **impact**

Additional Travel Donations: The Explorations Company, The Mullins Family, Kwando Safaris.

Donor Partners: European Union, US Embassy Self-Help Fund, SADC Challenge Fund, Jessica Rose – Jewellers Academy, BITC and SES Programme, Queens Program in International Development, and Cornell University.

And of course, our community partners who enable everything to come alive, our small businesses and community initiatives and our social programs including, Women Against Rape, Polokong, Maun Animal Welfare Society, Bana Ba Letsatsi, Feed A Child and Shelter Botswana.

Please remember to support our Economic Empowerment Programme and Crafhood Shop – [gosa@travelforimpact.com!](mailto:gosa@travelforimpact.com)



CHANGING LIVES FOREVER

P.O Box 1762, Maun, Botswana
Tel +267 686 4431 • Mobile +267 7437 9830
www.travelforimpact.com
Plot 245, Mathiba I Road, Maun, Botswana



The People's Path
Celebrating Culture & Heritage

